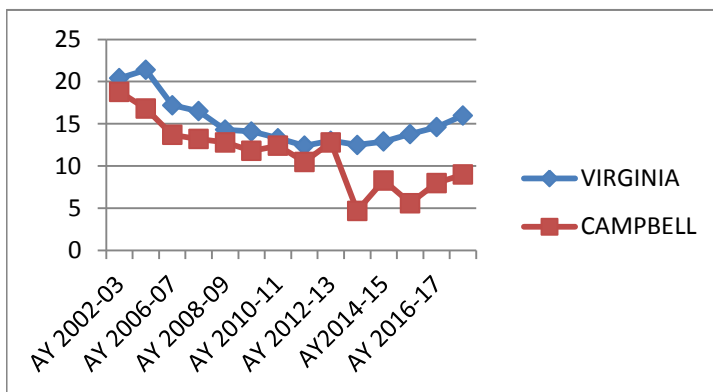




Kindergarten Readiness

Smart Beginnings Central Virginia is part of a statewide network of coalitions that focus on early childhood development and education, with the vision that every child will enter school ready to learn. Kindergarten Readiness, in addition to referring to the skills children have mastered, describes the system of care that children experience prior to beginning kindergarten. This may include the family, community, and any early care and education settings a child attended prior to formal schooling. In Virginia, most schools assess the skills of Kindergarten students using PALS-K, a measure of children's knowledge of literacy fundamentals, phonological awareness, letter recognition, concept of word and knowledge of letter sounds. PALS-K helps to identify children who are relatively behind in their acquisition of these fundamental skills.

Kindergarteners Whose PALS-K Scores were Below Readiness Levels



In the county, 9% of children scored below readiness levels. The state percentage was 16%.

	VIRGINIA	AMHERST	APPOMATTOX	BEDFORD	CAMPBELL	LYNCHBURG
AY 2002-03	20.4	17.8	10.6	18.1	18.8	21.7
AY 2008-09	14.3	12.1	7.5	9.9	12.8	14.2
AY 2012-13	13.0	12.4	n/a	11.7	12.8	14.0
AY 2013-14	12.5	8.5	6.0	12.1	4.7	12.8
AY 2014-15	12.9	11.8	n/a	11.7	8.3	12.3
AY 2015-16	13.8	16.2	10.3	12.8	5.6	14.5
AY 2016-17	14.6	17.0	13.0	15.0	8.0	16.0
AY 2017-18	16.0	18.0	5.0	16.0	9.0	17.0

What is Quality Child Care?

Children who attend high quality preschool / childcare programs are better prepared when they enter kindergarten, are less likely to repeat a grade, and more likely to graduate.

Things to Consider When Choosing Care

- Health and Safety
- Education and Training of Staff
- Classroom Structure
- Interactions between adults and children
- Learning Environment & Instruction
- Commitment to Quality (VSQI program)
- Communication with Families

For more information visit:
<http://www.smartbeginningscv.org>

Kindergarten Readiness Leads to Success

In order to succeed in kindergarten, and fully benefit from the kindergarten experience, children need to arrive at school with many skills in place that involve:

- Physical well-being and motor development
- Social and Emotional development
- Language development
- Cognition and general knowledge

An effective Early Childhood Education and Development System includes: families that support their children's development; schools that do everything necessary to assure the success of every child; and communities that invest time and resources in the well-being of children.

Highlights

Total Population (2016 Estimate)	54,952
Population under 5 years old (2016 estimate, U.S. Census)	2,583
Percent of population under 5 years old (2016 estimate)	4.7%
Percent of children (ages 0-17) Living in Poverty below 200% FPL (2011-15)	42.0%
Percent of children (ages 0-17) in Deep Poverty below 50% FPL (2011-2015)	7.8%
Percent of children eligible for free/reduced price lunch AY 16-17	42.9%
SNAP Participation Among Individuals 2016	40.2%
% of children identified as food insecure in 2015	16.8%
Unemployment Rate 2016	4.4%
Four-year olds Served by Virginia Preschool Initiative FY 2015 (funded slots)	155
2015-2016 Public Pre-Kindergarten Enrollment	238
On-Time Graduation Rate 2016	90
Dropout Rate 2016-17	3.8
Dropout Rate among Homeless	21.4
Dropout Rate among Economically Disadvantaged	4.6
% of Students Retained K-3 AY16-17	.61

Third Grade Assessments

Below are the percentages of 3rd grade students who demonstrated proficiency on SOL tests for the school year 2016-2017.

Third Grade	State	County
English: Reading	75	72
Mathematics	75	77

Fourth Grade Assessments

Below are the percentages of 4th grade students who demonstrated proficiency on SOL tests for the school year 2016-2017.

Fourth Grade	State	County
English: Reading	79	76
Mathematics	81	84

Eighth Grade Assessments

Below are the percentages of 8th grade students who demonstrated proficiency on SOL tests for the school year 2016-2017.

Eighth Grade	State	County
English: Reading	76	78
English: Writing	73	69
Mathematics	74	76
Science	79	76

Early Care and Education Programs

Quality Rating and Improvement System

Virginia Quality

Quality Rating and Improvement Systems (QRIS) exist in most states across the country and are a proven strategy to systematically improve the quality of childcare and early learning programs.

Virginia Quality is the state's voluntary QRIS.

Preschools and childcare programs can voluntarily participate in Virginia Quality and engage in a process of continuous quality improvement. VQ programs are evaluated and receive a rating (between 1-5 levels). The high level rating indicates that a program has met requirements related to curriculum, staff training, compliance with local governing authority and other quality indicators.

Professional Development opportunities are available that provide all of the training, learning and coaching necessary to deliver high quality services.

Amherst County Programs Participating in Virginia Quality

Altavista Y Discovery Place
 Bashful Giraffe
 Colbert Family Day Home
 Head Start
 Rebecca's Rainbow

Early Care and Education Workforce Support

Smart Beginnings supports the early care and education workforce with training, program incentives and individualized technical assistance.

Professional Development

Educational programs are available to all child care and preschool education providers. A list of upcoming programs can be found at www.smartbeginningscv.org

Smart Beginnings Central Virginia is a locally driven enterprise that creates community commitment to school readiness by bringing public and private leaders together to collaborate on priorities for their youngest citizens. Membership is free and open to anyone interested in improving services to children and helping every child to succeed in school, and in life.

Families, Health and County Facts

How do we compare?

- Campbell County kindergarten students scored above benchmark at higher rates compared to Virginia as a whole, for the third consecutive year (last available data academic year 2015-2016).
- Chronic Absenteeism (students missing 10% or more of days enrolled) was 8.4% in 2015-16, lower than the state rate of 10.4%.
- The cost of a child repeating a grade is estimated at \$10,793; less than 1% of children in grades K-3 were retained AY16-17, the lowest retention rate in the region.
- The percentage of children living in "deep poverty" is slightly higher than the state as a whole, but lower than other parts of the region, with the exception of Bedford County.
- The number of children (under age 18) identified as food insecure is 16.8% is higher than the state percentage of 14%.
- On-time high school graduation rates are at 90%, slightly lower than the state average of 91.3%.
- The rate of child abuse and neglect has dropped continuously since 7.4 in 2013, to 1.6 in 2016.
- 29.7% of children live with only one parent (2011-2015); in Virginia, 31.3% of children live in single parent households.

Select Indicators:

	State	County
First Trimester Prenatal Care 2015	81.6	85.7
Infant Mortality Rate 2015	5.9	5.7
Births to Mothers with Less than 12th Grade Education 2015	9.6	6.2
Resident Non-Marital Live Births 2015	35,512	219
Non-marital Births (women ages 15-44) 2015	34.5%	41.3%
Low Birth weight Babies 2015	7.9%	8.9%
Babies born by Medicaid as Payment Source 2015	30.5%	41.5%
% of Children Under Age 19 without Health Insurance 2015	5.0%	6.8%
Low-income Children Under 19 without Health Insurance 2015	7.8%	6.9%
Rate of Child Abuse & Neglect (Founded Number Per 1,000 Children) 2016	2.5	1.6
Teen Pregnancy Rate Per 1,000 10-19 year olds, 2015	12.0	14.9