

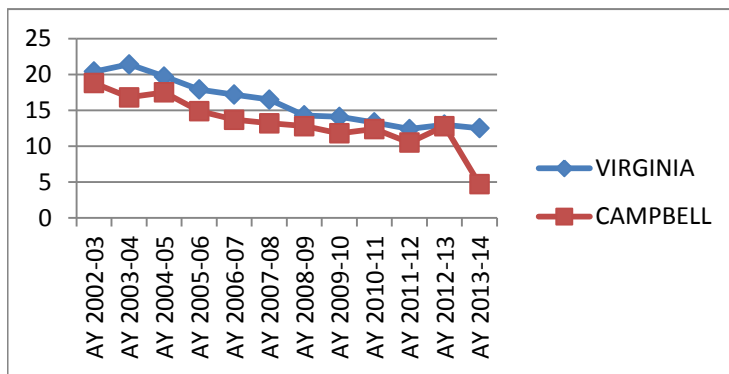


2014 Early Childhood Profile

Kindergarten Readiness

Smart Beginnings Central Virginia is part of a statewide network of coalitions that focus on early childhood development and education, with the vision that every child will enter school ready to learn. Kindergarten Readiness, in addition to referring to the skills children have mastered, describes the system of care that children experience prior to beginning kindergarten. This may include the family, community, and any early care and education settings a child attended prior to formal schooling. In Virginia, most schools assess the skills of Kindergarten students using PALS-K, a measure of children's knowledge of literacy fundamentals, phonological awareness, letter recognition, concept of word and knowledge of letter sounds. PALS-K helps to identify children who are relatively behind in their acquisition of these fundamental skills.

Kindergarteners Whose PALS-K Scores were Below Readiness Levels



In the county, 4.7% of children scored below readiness levels. The state percentage was 12.5%.

	VIRGINIA	AMHERST	APPOMATTOX	BEDFORD	CAMPBELL	LYNCHBURG
AY 2002-03	20.4	17.8	10.6	18.1	18.8	21.7
AY 2003-04	21.4	15.7	12.1	13.9	16.8	19.9
AY 2004-05	19.7	11.9	11.9	13.9	17.5	24.5
AY 2005-06	17.9	n/a	9.1	14.1	14.9	13.8
AY 2006-07	17.2	13.1	13.3	11.1	13.7	18.1
AY 2007-08	16.5	12.7	10.1	12.8	13.2	14.9
AY 2008-09	14.3	12.1	7.5	9.9	12.8	14.2
AY 2009-10	14.1	9.9	9.6	10.4	11.8	21.0
AY 2010-11	13.3	14.4	n/a	10.2	12.4	18.2
AY 2011-12	12.4	9.0	7.7	12.3	10.5	18.5
AY 2012-13	13.0	12.4	n/a	11.7	12.8	14.0
AY 2013-14	12.5	8.5	6.0	12.1	4.7	12.8

What Influences School Readiness?

Many things have been shown to affect student readiness for school:

- Health issues such as lack of prenatal care and low birth weight;
- Poverty
- Abuse and Neglect
- Mother's Educational level
- High Quality Preschool / Childcare Programs: children who attend high quality preschool / childcare programs are better prepared when they enter kindergarten, are less likely to repeat a grade, and more likely to graduate.

In order to succeed in kindergarten, and fully benefit from the kindergarten experience, children need to arrive at school with many skills in place that involve:

- Physical well-being and motor development
- Social and Emotional development
- Language development
- Cognition and general knowledge

An effective Early Childhood Education and Development System includes: families that support their children's development; schools that do everything necessary to assure the success of every child; and communities that invest time and resources in the well-being of children.

Highlights

Total Population (2012 estimate, U.S. Census)	55,163
Population under 5 years old (2012 estimate, U.S. Census)	2,813
Number of children receiving Child Care Subsidies (2009)	239
Percent of children Living in Poverty (ages 0-17) (2012)	19.2%
Percent of children eligible for free/reduced price lunch AY 13-14	44.4%
Number children in TANF (2009)	1,498
SNAP Participation Among Individuals 2011	10,878
Unemployment Rate 2011	6.7
Four-year olds Served by Virginia Preschool Initiative FY 2014 (funded slots)	174
2013-2014 Public Pre-Kindergarten Enrollment	339
On-Time Graduation Rate 2013	86.9
Dropout Rate	4.5
Dropout Rate among homeless	45.5
% of Students Retained K-3 VA FY12	2.19
% of Students Retained K-3 County	2.45

Third Grade Assessments

Below are the percentages of 3rd grade students who demonstrated proficiency on SOL tests for the school year 2013-2014.

Third Grade	State	County
English: Reading	69	66
Mathematics	67	73
Science	83	75
History & Social Science	86	79

Fourth Grade Assessments

Below are the percentages of 4th grade students who demonstrated proficiency on SOL tests for the school year 2013-2014.

Fourth Grade	State	County
English: Reading	70	65
Mathematics	80	81

Eighth Grade Assessments

Below are the percentages of 8th grade students who demonstrated proficiency on SOL tests for the school year 2013-2014.

Eighth Grade	State	County
English: Reading	70	65
English: Writing	70	64
Mathematics	67	73
Science	74	62

Early Care and Education Programs

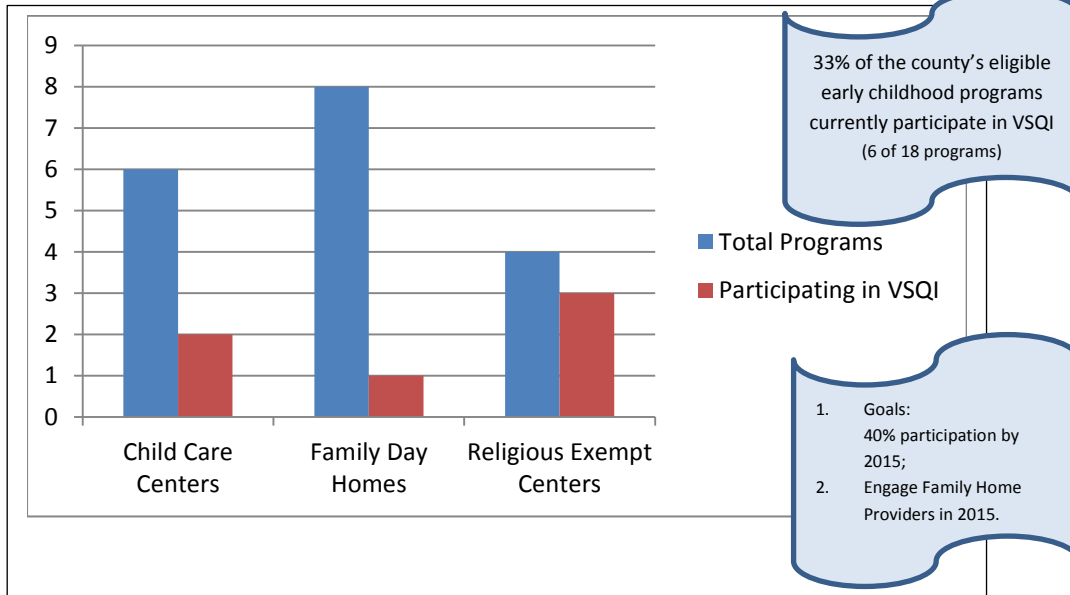
Virginia Star Quality Initiative (VSQI)

Preschools and Child Care programs can voluntarily participate in the VSQI initiative, and engage in a process of continuous quality improvement. VSQI programs are evaluated and receive a star rating (between 1-5 stars). The higher star rating indicates that a program has met requirements related to child-to-caregiver ratios, curriculum, staff training, compliance with local governing authority and other quality indicators.

Early Care and Education Workforce Support

Smart Beginnings supports the early care and education workforce with training, program incentives and through collaboration with other professional development programs.

Campbell County Early Childhood Care and Education Programs



Professional Development

Educational programs are available to all child care and preschool education providers. A list of upcoming programs can be found at www.smartbeginningscv.org

Smart Beginnings Central Virginia has active task forces in each county/city in its region. The Campbell County Child Development Task Force includes representatives from Community Services, Public Schools, Public Library, Va. Cooperative Extension and Parks & Rec. Membership is free and open to anyone interested in improving services to children and helping every child to succeed in school, and in life.

Star Quality Programs 2014: Bashful Giraffe; Hyland Heights Child Development Center; St. Andrew Preschool; Rebecca's Rainbow; TITUS Early Learning Center

Families, Health and County Facts

- There are a total of 18 VSQI eligible child care / early education programs registered through the Department of Social Services in Campbell County; this does not include public preschool.
- The U.S. Census Bureau estimates 2,813 children under the age of five live in Campbell County, just over 5% of the population.
- 79 children were on a waiting list to attend Public Preschool in the county in 2012-2013.
- 152 children repeated a grade in 2012 (estimated cost \$1.6 million)
- Over 10,000 Campbell County residents relied on Medicaid in 2011
- In 2013, 11% of children received Special Education Services
- There were 22 weapons offenses in schools (AY 2013-2014) and 79 offenses involving Alcohol, tobacco and other Drugs. There were 388 reports of Disorderly or Disruptive Behavior
- 28% of inmates in the County Detention Center (Dec 2013) have a High School Diploma or GED. 72% do not.
- 45% of Public School teachers have earned a Master's Degree in Campbell County (AY 2013-2014)

Select Indicators:

	State	County
Infant Mortality Rate 2012	6.3	6.3
Births to Mothers with Less than 12th Grade Education 2012	9.7%	9.2%
Non-marital Births (women ages 15-44) 2012	35.3%	34.2%
Low Birth weight Babies 2012	8.2%	6.3%
% of Children Under Age 19 without Health Insurance 2012	6.0%	6.3%
Low-income Children Under 19 without Health Insurance 2012	9.7%	7.5%
Rate of Child Abuse & Neglect (Founded Number Per 1,000 Children) 2013	3.0	7.4
Teen Pregnancy Rate Per 1,000 15-17 year olds, 2011	16.3	17.8
Teen Pregnancy Rate Per 1,000 18-19 year olds, 2011	62.2	92.7