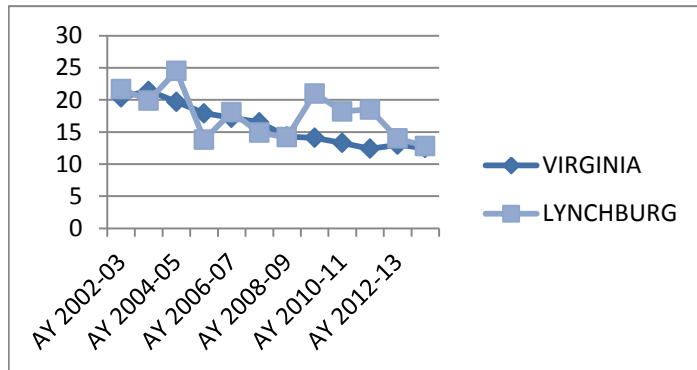




Kindergarten Readiness

Smart Beginnings Central Virginia is part of a statewide network of coalitions that focus on early childhood development and education, with the vision that every child will enter school ready to learn. Kindergarten Readiness, in addition to referring to the skills children have mastered, describes the system of care that children experience prior to beginning kindergarten. This may include the family, community, and any early care and education settings a child attended prior to formal schooling. In Virginia, most schools assess the skills of Kindergarten students using PALS-K, a measure of children's knowledge of literacy fundamentals, phonological awareness, alphabet recognition, concept of word and knowledge of letter sounds. PALS-K helps to identify children who are relatively behind in their acquisition of these fundamental skills.

Kindergarteners Whose PALS-K Scores were Below Readiness Levels



In the city, 12.8% of children scored below readiness levels. The state percentage was 12.5%.

	VIRGINIA	AMHERST	APPOMATTOX	BEDFORD	CAMPBELL	LYNCHBURG
AY 2002-03	20.4	17.8	10.6	18.1	18.8	21.7
AY 2003-04	21.4	15.7	12.1	13.9	16.8	19.9
AY 2004-05	19.7	11.9	11.9	13.9	17.5	24.5
AY 2005-06	17.9	n/a	9.1	14.1	14.9	13.8
AY 2006-07	17.2	13.1	13.3	11.1	13.7	18.1
AY 2007-08	16.5	12.7	10.1	12.8	13.2	14.9
AY 2008-09	14.3	12.1	7.5	9.9	12.8	14.2
AY 2009-10	14.1	9.9	9.6	10.4	11.8	21.0
AY 2010-11	13.3	14.4	n/a	10.2	12.4	18.2
AY 2011-12	12.4	9.0	7.7	12.3	10.5	18.5
AY 2012-13	13.0	12.4	n/a	11.7	12.8	14.0
AY 2013-14	12.5	8.5	6.0	12.1	4.7	12.8

SOURCE: KIDS COUNT DATA CENTER

What Influences School Readiness?

Many things have been shown to affect student readiness for school:

- Health issues such as lack of prenatal care and low birth weight;
- Poverty
- Abuse and Neglect
- Mother's Educational level
- High Quality Preschool / Childcare Programs: children who attend high quality preschool / childcare programs are better prepared when they enter kindergarten, are less likely to repeat a grade, and are more likely to graduate.

In order to succeed in kindergarten, and fully benefit from the kindergarten experience, children need to arrive at school with many skills in place that involve:

- Physical well-being and motor development
- Social and Emotional development
- Language development
- Cognition and general knowledge

An effective Early Childhood Education and Development System includes: families that support their children's development; schools that do everything necessary to assure the success of every child; and communities that invest time and resources in the well-being of children.

Highlights

Total Population (2013 estimate, U.S. Census)	78,014
Population under 5 years old (2013 estimate, U.S. Census)	4,915
Number of children receiving Child Care Subsidies (2009)	769
Percent of children Living in Poverty (ages 0-17) (2012)	29.3%
Percent of children eligible for free/reduced price lunch AY 12-13	62.6%
Number children in TANF (2009)	661
SNAP Participation Among Individuals 2011	17,521
Unemployment Rate 2011	8.2%
Total 2013 – 2014 Public Preschool Enrollment (VPI)	318
Four-year olds Served by Virginia Preschool Initiative FY 2014 (funded)	323
2013-2014 Public Kindergarten Enrollment	731
On-Time 4 year Graduation Rate 2014	80.9%
Drop Out Rate 2014	9.1
Percent of Students Retained K-3 AY2011-2012	2.09

Third Grade Assessments

Below are the percentages of 3rd grade students who demonstrated proficiency on SOL tests for the school year 2013-2014.

Third Grade	State	City
English: Reading	69	55
Mathematics	67	47
Science	83	71
History & Social Science	86	74

Fourth Grade Assessments

Below are the percentages of 4th grade students who demonstrated proficiency on SOL tests for the school year 2013-2014.

Fourth Grade	State	City
English: Reading	70	58
Mathematics	80	64

Eighth Grade Assessments

Below are the percentages of 8th grade students who demonstrated proficiency on SOL tests for the school year 2013-2014.

Eighth Grade	State	City
English: Reading	70	55
English: Writing	70	60
Mathematics	67	58
Science	74	60

Early Care and Education Programs

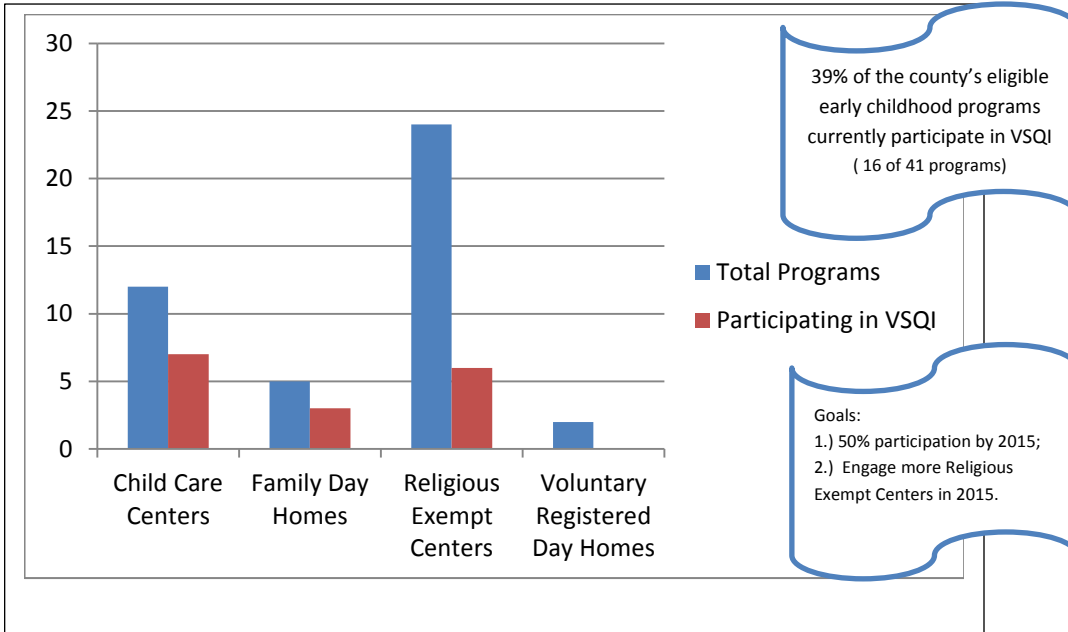
Virginia Star Quality Initiative (VSQI)

Preschools and Child Care programs can voluntarily participate in the VSQI initiative, and participate in a process of continuous quality improvement. VSQI programs are evaluated and receive a star rating (between 1-5 stars). The higher star rating indicates that a program has met requirements related to child-to-caregiver ratios, curriculum, staff training, compliance with local governing authority and other quality indicators.

Early Care and Education Workforce Support

Smart Beginnings supports the early care and education workforce with training, program incentives and through collaboration with other professional development programs.

Lynchburg City Early Childhood Care and Education Programs



Professional Development

Educational programs are available to all early childhood care and education providers. A list of upcoming programs can be found at: www.smartbeginningscva.org

Smart Beginnings Central Virginia has active task forces in each county/city in its region. The Lynchburg City Task Force includes representatives from City and Community Services, Public Schools, Public Library, Healthy Families, Health Department, Va. Cooperative Extension and Social Services. Membership is free and open to anyone interested in improving services to children and helping every child to succeed in school, and in life.

Families, Health and City Facts

- There are a total of 44 child care / early education programs registered through the Department of Social Services in the City of Lynchburg; 41 are VSQI eligible; 16 are VSQI participants.
- The U.S. Census Bureau estimates 4,915 children under the age of five live in the City of Lynchburg, just over 6%. (2013 estimate)
- Total public school enrollment (Pre-K – 12) was 8,599 in 2013-2014.
- Total enrollment Pre-K – Grade 3 was 3,116.
- The percent of children retained in Grades K-3 was 2.09%. (AY2011-12)
- The cost of children repeating a grade (K-3) is estimated at \$626,869.00. The total cost of retention (K-12) is much higher.
- In 2008, 5.1% of children received Special Education Services.
- There were 18 weapons offenses in schools (AY 2013-2014). This was the lowest number in three years. There were 47 offenses involving Alcohol, tobacco and other Drugs, this was higher than in previous years. There were 1,523 reports of Disorderly or Disruptive Behavior. This was lower than the two previous years.
- 46% of Public School teachers have earned a Master's Degree (AY13-14).
- 20% of inmates in the City Detention Center have a H.S. Diploma or GED. 80% do not.

Select Indicators:

	State	City
Infant Mortality Rate 2012	6.3	1.9
Births to Mothers with Less than 12th Grade Education 2012	9.7%	9.7%
Non-marital Births (women ages 15-44) 2012	35.3%	41.8%
Low Birth weight Babies 2012	8.2%	8.7%
% of Children Under Age 19 without Health Insurance 2012	7.4%	5.3%
Low-income Children Under 19 without Health Insurance 2012	9.7%	6.4%
Rate of Child Abuse & Neglect (Founded Number Per 1,000 Children) 2013	3.0	5.0
Teen Pregnancy Rate Per 1,000 15-17 year olds, 2012	14.3	15.7
Teen Pregnancy Rate Per 1,000 18-19 year olds, 2011	56.1	25.2